

# Pipe Flashings for Metal Universal Round Base



## Designed to waterproof roof penetrations through metal roof panels

Round base universal pipe flashing designed with sleeve flexibility to absorb vibration and pipe movement caused by expansion/contraction while sealing out unwanted elements. Easy on-site customization can accommodate virtually all installations. Available in standard EPDM and silicone high temperature models for extreme temperature applications.

- Superior sleeve flexibility and vibration resistant.
- Adaptable base designed to mold to most panel configurations and roof pitch regardless of pipe location.
- Aluminum base ring for easy molding and fastener stability.
- 20 Year limited warranty and superior weatherability.
- UPC Code approval, IAMPO & CSA listing.
- Florida Building Code approval FL 28400.2
- Easy to read size cut markings.



## Specifications

### Performance Temperature Range

Standard EPDM flashings -65 deg F to 212 deg F

High Temp Silicone flashings -100 deg F to 437 deg F

Adv Ozone Resistance Testing: 70 hr @ 500pphm

Design Uplift Pressure = -300 PSF (21 fasteners)

Florida Building Code Approved :

#3 Gray & #3 Colors

Approval # FL 28400.2



100% Made in North America,



Buy American Plan Compliant.

## Selection

GRAY EPDM Silicone HT

Size	Fits Pipes	Base	Qty/Box	Part#	Part#
#1	0.25"- 2.5"	4.75"	15	DML1GR	DML1HTG
#2	1.75"- 3"	6.25"	15	DML2GR	DML2HTG
#3	0.05"- 5"	7.75"	15	DML3GR	DML3HTG
#4	3" - 6.25"	9.25"	10	DML4GR	DML4HTG
#5	4.25"- 7.75"	10.5"	10	DML5GR	DML5HTG
#6	5"- 9"	13"	10	DML6GR	DML6HTG
#7	6"- 11"	14.5"	10	DML7GR	DML7HTG
#8	7"- 13"	16.5"	5	DML8GR	DML8HTG
#9	9"- 19"	25-1/4"	5	DML9GR	DML9HTG
#10	12" to 28"	34" (SQ)	5	DML10GS	DML10HTR

Other Colors available in #3 size of EPDM

Black, Bright Red, Brown, Copper, Dark Blue, Dark Gray, Dark Green, Light Blue, Tan, Terracotta, White.

## Installation

See reverse of this page

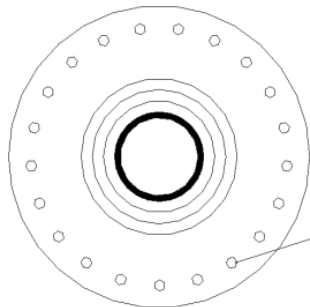
**MSDS:** Based on current requirements of the occupational safety and health administration code, 26CFR, part 19101200 (Hazard communication), it has been determined that our pipe flashing products are considered "articles". A material safety data sheet is not required for items meeting the code definition of "article".

**NICORR 4050 Lincoln Hwy. Boubon, IN 46504 ph: 574-342-0700**

# Installation Guide

## Pipe Flashings for Metal

### Universal Round Base



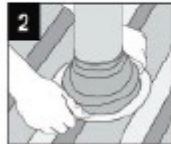
FBC Installation to Wood:  
#10-15 HWH Fasteners  
equally spaced around  
base 1-1/2" OC

#### 21 FASTENERS

- Find pipe size in the table below and trim flashing as shown
- Use one size larger flashing on steep roof or deep corrugations
- #1 and #3 flashings have closed tops, other sizes are open



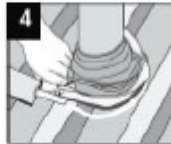
Choose pipe opening and trim



Slide over pipe



Form to roof profile



Apply sealant



Fasten to complete

Do not use adjustable band clamps. DMI universal pipe flashings do not need them and they may damage the product.

Size and Trimming Chart (Inches)

Pipe Dimension	#1	#2	#3	#4	#5	#6	#7	#8	#9
Top	.25		0.125						
	.63		0.63						
	.57		1.1						
	.92 - 1.0		1.05						
	1.25 - 1.50	1.75 - 2	2.25 - 2.75	3 - 3.75	4.25 - 5	5 - 5.50	6 - 6.50	7 - 8	10
	1.75 - 2	2.37 - 2.5	2.75 - 3.25	3.75 - 4.60	5 - 5.75	5.50 - 6	6.50 - 7	8 - 8.50	11
	2 - 2.37	2.75 - 3	3.25 - 4	4.50 - 5.25	5.75 - 6.50	6 - 6.50	7 - 7.50	8.50 - 9	12
			4 - 4.75	5.25 - 5.75	6.50 - 7	6.50 - 7	7.50 - 8	9 - 9.50	13
			4.75 - 5	5.75 - 6.25	7 - 7.50	7 - 7.50	8 - 8.50	9.50 - 10	14
						7.50 - 8	8.50 - 9	10 - 10.50	15
						8 - 8.50	9 - 9.50	10.50 - 11.50	16
						8.50 - 9	9.50 - 10	11.50 - 12	17
							10 - 10.50	12 - 13	18
							10.50 - 11		19
Base Dimension	4.75	6.25	7.75	9.25	10.50	13	14.50	16.50	25.25

**MSDS:** Based on current requirements of the occupational safety and health administration code, 26CFR, part 19101200 (Hazard communication), it has been determined that our pipe flashing products are considered "articles". A material safety data sheet is not required for items meeting the code definition of "article".

**NICORR 4050 Lincoln Hwy. Boubon, IN 46504 ph: 574-342-0700**